



LIFAair

LIFAair International Limited

Manufactured by Dongguan LIFAair Technology Ltd.
Address: No. 2, East Industry Road, Songshan Lake Science &
Technology Industrial Park, Dongguan, 523808, CHINA
www.lifaair.com Designed in Finland

LA502 Smart Air Purifier

Please read the user manual before using the product, and do keep securely for future reference.

Warning: Before first time use, you must take out all HEPA-filters and remove the moisture proof protective bag on the activated carbon barrel.

Thank you for selecting LIFAair! You are about to enjoy superior Finnish technology and innovation for quality living.

Important safety information

- Only use attachments/accessories provided by the manufacturer.
- Keep the machine away from children to avoid accidents.
- Do not block any ventilation openings. Install the machine in accordance with the manufacturer's instructions.
- Make sure the machine stands in the upright position, never operate the machine when in other orientations.
- Unplug the machine when it is not being used for a long period of time.
- Do not use this machine in rooms with large temperature differences to avoid water condensation inside.
- Protect the power cord from being walked on or pinched.
- Please switch off and unplug the machine before moving it or cleaning and/or replacing the filters.
- Do not use this machine in high temperature and/or humidity environments, such as bathrooms.
- Never open the power adapter to avoid electric shock and impact on warranty.
- For user safety and product protection, do not sit or lean on the machine.
- Do not put objects into the movable portion, the air inlet and/or outlet.
- Do not place the product directly under air conditioning units to prevent condensed water droplets.
- With the exception of professional maintenance personnel, please do not attempt to repair the product.
- To prevent electric shocks, be sure to follow the requirements of the method and manner of this manual for cleaning and maintaining the product. Please do not try to maintain the product in any other way.
- Please ensure that the machine is used only with the power supply unit provided with the appliance.

Safety marking label of main unit is on the bottom plate of the product.



Use only with the cart, stand, tripod, bracket, or table specified by the manufacturer, or sold with the apparatus. When a cart is used, use caution when moving the cart/apparatus combination to avoid injury from tip-over.



Correct disposal of this product. This marking indicates that this product should not be disposed with other household wastes throughout the EU. To prevent possible harm to the environment or human health from uncontrolled waste disposal, recycle it responsibly to promote the sustainable reuse of material resources. To return your used device, please use the return and collection systems or contact the retailer where the product was purchased. They can take this product for environmental safe recycling.

Power warning:

- Place the product near the power outlet.
- Before use, make sure that the operating voltage is the same as your local power supply. Correct operating voltage can be found on the product plate.
- For safety purpose, unplug the product during lightning storms or when unused for extended periods of time.
- Under normal conditions, the power supply may get hot. Please keep good ventilation in the area and exercise caution.
- Safety warning labels on the housing or bottom of the product or power adaptor.



This symbol is to alert the user to the presence of un-insulated dangerous voltage within the product's enclosure that may be of sufficient magnitude to constitute a risk of electric shock to persons.



This symbol is to warn the user not to disassemble the enclosure of the product and there is no user-replaceable part inside. Take the product to an authorized service center for repair.



This symbol indicates that the product is for indoor use only.

For wireless product:

1. Wireless product may generate shortwave radio frequencies and interfere with the normal use of other electronic devices or medical equipment.
2. Turn off the product when it's disallowed. Do not use the product in medical facilities, on airplane, at gas stations, near automatic gates, automatic fire alarm system or other automated devices.
3. Do not use the product in the vicinity of a pacemaker within a 20cm range. The radio waves may affect the normal operation of the pacemaker or other medical devices.



WARNING!

Danger of explosion if the battery is incorrectly replaced. Replace only with the same or equivalent type. For products with removable battery, the battery must be properly recycled or disposed. For products with built-in battery, disassembling is prohibited. Never disassemble, hit with force, squeeze batteries or dispose of batteries in fire. Do not expose batteries in conductive materials, liquid, fire or heat. Do not let metal object contact two battery poles. If the battery looks swollen, leaking, discolored, having odor or any abnormal appearance, stop using it. Do not use the battery after immersed in water. Improper use of battery may lead to explosion or leakage, causing skin burn or other injuries; in the event of battery leakage, handle it with care and immediately dispose of the battery in the manner in compliance with applicable laws and regulations in your locality.

Air purifier main unit x1
Activated carbon barrel x2
HEPA filter x2
Smart controller x1
Power cord x1

Instructions manual / Certificate x1
Power adapter (for air purifier) x1
Power adapter (for smart controller) x1
Smart controller charging cable x1



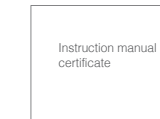
Air purifier main unit



HEPA filter (use inside main unit) x2



Activated carbon barrel (the outer surface is prefilter, use inside main unit) x2



Smart controller



Power adapter (for smart controller)



Smart controller charging cable



Power adapter (for air purifier)



Power cord

Main unit



- ① Touch control surface: To change wind speed and enter into pairing mode.
- ② Working status / power indicator

Smart controller not connected
Green light slowly flashing: standby mode
Green light flashing: response touch control
Green light rapid flashing: pairing with controller
Green light remains steady: operating mode
Smart controller is connected
White light slowly flashing: standby mode
White light flashing: response touch control
Light is steady: operating mode

- ③ air intake
- ④ DC power connector (connect to power adapter)
- ⑤ bottom cover

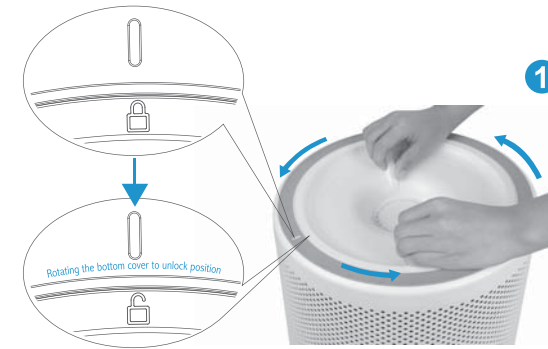
Smart Controller



- ① Light sensor: brightness of display automatically adjusts according to ambient brightness.
- ② On / off key: Long press: switch on/off short press: display time, switch off / on the screen
- ③ Air suction inlet: Where air is suctioned into Smart controller
- ④ PM2.5 sensor air inlet
- ⑤ Power connector: dedicated charging power cable

- ⑥ Serial Number: serial number of Smart controller (retain for warranty purpose)
Code: Device identification code is used to unlock remote control function in LIFAair APP. Search Smart controller within LIFAair APP, click icon of controller and input this code to open remote control function within LIFAair APP.
Note: 1) This code is not case-sensitive
2) This code is the last six digits of you device's MAC address.
- ⑦ Air exhaust outlet: Smart controller air exhaust

Note: Do not block the air intake and exhaust area, pad made by plush fabrics class will clog the exhaust area.



Cover the ground with a layer of soft towel or any protective pad, flip the main unit upside down while rotating bottom cover to unlock. (Make sure that DC power is turned off).



Remove the bottom cover.



Hold the top of HEPA filter with both hands and lift to remove.



Open the protective bag to find the side handle of activated carbon barrel, take out the carbon barrel (repeat the same action for the carbon barrel at the bottom).



Remove the protective bag on the carbon barrel.



Put back the HEPA filter into the carbon barrel.



7

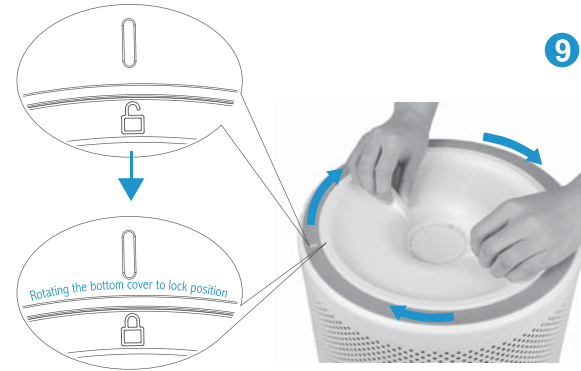
Put the carbon barrel and filter combination back into the main unit and gently shake it in place (Repeat step 6 and 7, and put the second layer of the carbon barrel and filter combination into the main unit).

8



Close bottom cover.

9



Lock the bottom cover (be sure to rotate the bottom cover to the lock position).

10



The installation is completed. Flip the main unit carefully back to the upright position.

Connect the power supply



Remove the protective strip on the DC power connector, take out the power cord and connect to the power adapter. Connect the adapter to the main unit & plug in the power. The main unit will be in standby mode, LED lights will flash slowly.



Correct positioning

In order to optimize the best use from the air purifier, please ensure that air inlets should maintain a certain distance from the wall and other obstructions.



Manual control wind speed

The machine is designed with 121 wind speed, the accurate speed control setting can reflect the PM2.5 level precisely.



Touch the top surface of the main unit, rotate clockwise to increase wind speed (Continuously rotate clockwise until the power light remains constant indicating maximum wind speed).



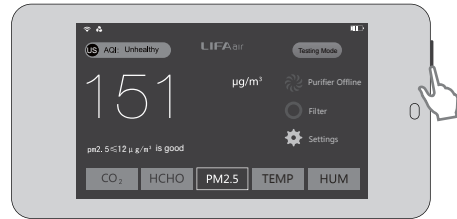
Touch the top surface of the main unit and rotate counter-clockwise to reduce wind speed (Continuously rotate counter-clockwise until the power light blinks slowly. You are entering standby mode at zero wind speed).

Note: The pictures in this manual are schematics and may slightly differ from final production, therefore defer to product.



Pairing

Smart controller can be connected to the main unit via Bluetooth. This machine has been paired at the factory, therefore you can directly plug to use. If you require pairing, please follow the steps below.

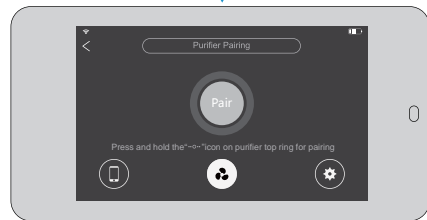


1. Plug in the main unit first, press and hold the on/off key on smart controller to switch on the unit. Once the light turns green on the main unit, it is switched on.

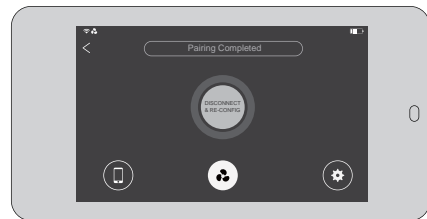


2. Slide the touch surface counterclockwise so that the green light blinks slowly. With one finger press and hold the "o" position on touch surface for more than five seconds until the green light flashes rapidly. The main unit will pair with the smart controller within 30 seconds.

NOTE: When pairing, the unit must be on standby mode (i.e. green light blinks slowly).



3. Click settings on the screen → → , smart controller and the main unit are into self pairing process.



4. After successful pairing, the main unit power / status indicator turns white, the monitor prompts "Pairing Completed". If pairing fails, repeat the above steps.

Note: Due to product updates and software upgrades, the description here may not match the user interface therefore defer to product.



Your air purifier's smart controller can accurately monitor carbon dioxide (CO₂) concentration, formaldehyde concentration, PM2.5 concentration and automatically purifies the environment. The concentration of PM2.5 and formaldehyde is reduced to a healthy range. After pairing with the main unit, the smart controller can also monitor temperature and humidity. The smart controller will monitor air quality measured in six levels: good, moderate, unhealthy for sensitive groups, unhealthy, very unhealthy and hazardous.

Touch "CO₂" for accurate reading of carbon dioxide. ≤1000ppm is in the good range. We recommend that you open windows for ventilation if your reading exceeds this number. It takes approximately 40 seconds to stabilize the room and adjust CO₂ levels.

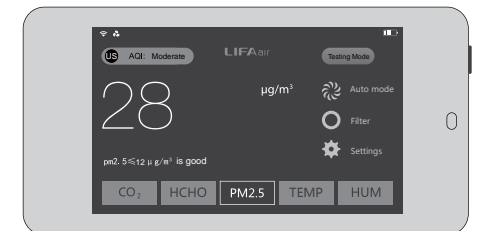


Touch "HCHO" for accurate reading of formaldehyde concentration. China Standard is ≤ 0.08mg/m³ United States Standard is ≤ 0.06mg/m³



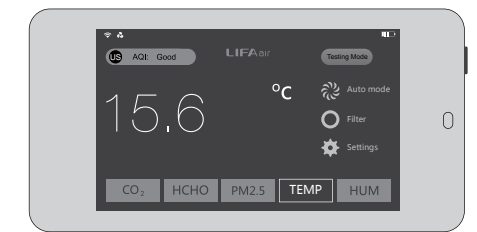
Formaldehyde sensor inside the controller operates based on electrochemical principles, hence it can be affected by other non-formaldehyde gases, especially alcohol and perfume. Formaldehyde in the room releases continuously and slowly, it does not increase suddenly in a short period of time, so if the reading rapidly increases, please remain calm and note that it could be perfume or other substances. A stable reading will follow.

Touch "PM2.5" to display realtime measurements of PM2.5. It takes about 20 seconds for a reading. China Standard 75µg / m³ American standards is 35µg / m³

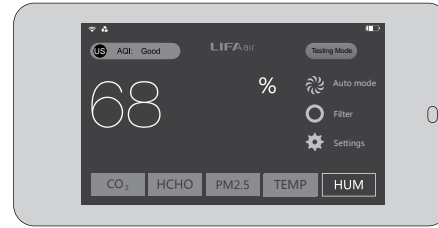


Note: PM2.5 sensor is at the top left corner behind the screen, for measuring PM2.5 concentration, the air intake for PM2.5 sensor should be unimpeded.

Touch "TEMP" to show temperature reading.

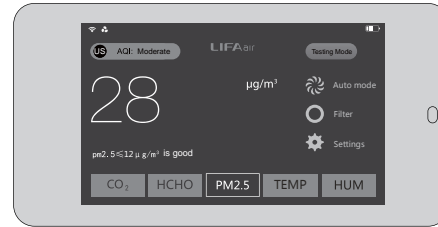


Touch " HUM " to show the relative humidity.



Continuous Short-term Monitoring of the Smart Controller

Touch " Testing Mode " to enable the smart controller to continuously monitor for 5 minutes. Otherwise the monitor only measuring for 1 minute by touching the screen.



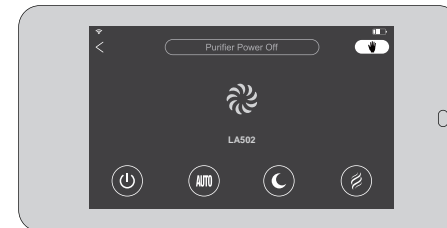
Note: When the smart controller is paired with the main unit the white LED light will be lit. The smart controller continues to operate and monitor the air quality and operation of the unit even when the screen on the controller displays the clock or is blank.

The Use of Smart Controller

The smart controller is the core of this intelligent system. Please ensure that it is constantly paired with the main unit.

1. Control Panel: Click to enter the mode selection screen

- Power Off
- Auto mode: According to the realtime indoor air quality, the system auto-adjusts the wind speed of the main unit (recommended use)
- Sleep mode: Ultra-low noise operation to create a comfortable sleep environment (Regular mode: the unit continues to run at this speed)
- Turbo mode: runs at full speed, rapid purification (Regular mode: fast run for 90 minutes and then automatically switches to medium speed to run).
- Manual mode: You can manually adjust the wind speed of the main unit click to return to mode selection interface click to return homepage of smart controller



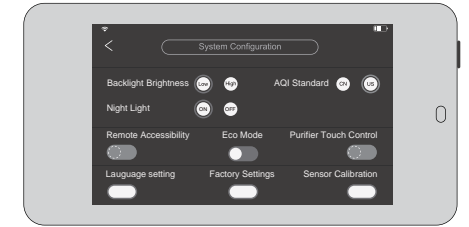
Note: Touching the main unit surface allows you to change wind speed manually, which lasts 5 minutes before it automatically resumes " auto mode ". If you want full manual control for wind speed, you can turn the smart controller into manual mode. If your smart controller is disconnected from the main unit , the power/status light will turn green. The main unit will maintain its manual setting, therefore the fan will not switch back to "auto" mode. We do not recommend that the main unit operates in "manual" mode, because it will cause unnecessary energy waste and extra filter usage.

The Use of Smart Controller

The smart controller is the core of this intelligent system. Please ensure that it is constantly paired with the main unit.

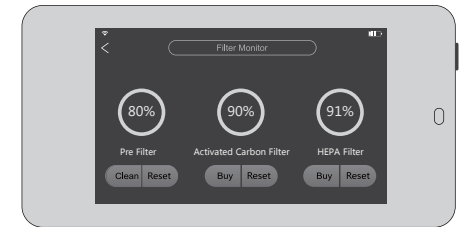
2. Click on the monitor, You can set the function

- Backlight Brightness: Low → dark mode; high → bright mode. In both modes, light sensor automatically adjusts the brightness according to the environment.
- AQI Standard : Select the air quality standards (CN or US standard) as the control standard. Select U.S. standard, purifiers work more strongly, especially at night.
- Night Light : Turn on or off nightlight function. If you turn on this function, during 22:00 - 06:00 period and under connected with the power adapter condition, touching the screen will have high-intensity illumination for 3 minutes, used as nightlight.
- Remote Accessibility : Allow or prevent the phone APP to operate main unit, in disabled state, the phone APP can only view and cannot control.
- ECO mode : Turn on or off the smart ventilation detection function. After turning on, the operating mode will be subject to status of window control, to achieve energy-saving effects and reduce the use of filters (because when the window opened, whether air quality meets standard or not, the running of air purifier would be meaningless).
- Purifier Touch Control : Turn on or off the touch function, to prevent others from touching inadvertently.
- Language settings: → Chinese ; → Traditional Chinese; → English
- Factory settings : Click the confirmation, the smart controller settings will be restored to factory settings and the WiFi internet networks will be disconnected.
- Sensor Calibration : Perform zeroing for sensors according to the screen tips to ensure the accuracy of the sensor.



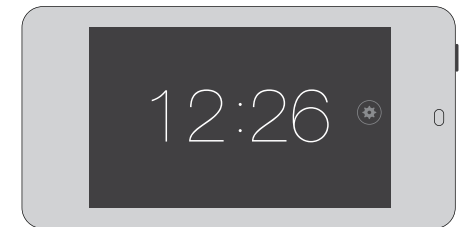
3. Filter Checking

Click Filter → enter the filter monitoring interface
Please clean or replace the filters when the percentage approaches 5%.
After cleaning or replacing the filter, please click "Reset" and confirm, in order to restart the smart monitoring system.



4. The clock display / adjustment

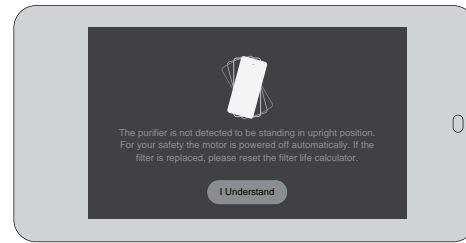
- ① The smart controller when plugged into the power automatically displays the time like a screensaver. Alternatively, press the on/off button to display the time. (When using the battery power, the screen does not display the time). The backlight / night light function runs from 22:00 ~ 06:00 on the touchscreen and the display shows the clock in white background and black colour words for three minutes.
- ② In the clock display screen, click on the right side of the screen, you can manually set the time, after the setup is completed, click to save the current time setting.



Note: The controller will automatically sync to local time zone once connected to Wi-Fi via cloud server. Please note this function may be not applicable in certain areas, please set time manually if so.

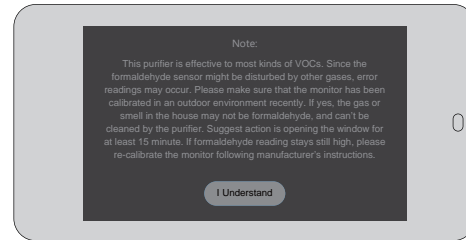
Main unit warnings:

When main unit purifier is operated, it cannot be tilted, otherwise this screen appears on the smart controller.



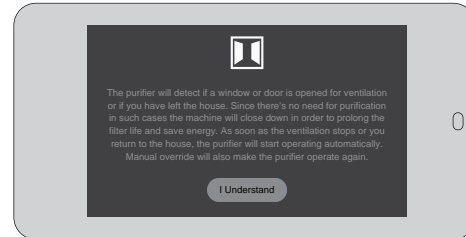
Formaldehyde reading error:

Because formaldehyde sensor is not only sensitive to formaldehyde, when abnormal formaldehyde readings are detected, the screen changes to this picture.



Ventilation warning:

When you open windows, doors or leave home, the smart controller may detect abnormalities and this screen will appear. The main unit will stop working when window is opened. After you complete ventilation, doors and windows should be closed or return home, then click the auto mode (C) sleep mode (M) auto mode, to restore full intelligence operation. You can also directly touch and slide the circle so that the main unit is back to work.



Note: Only when the smart controller runs in "AUTO" mode will it detect the "ventilation" status

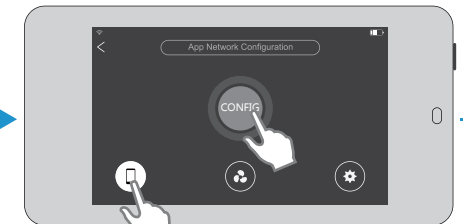
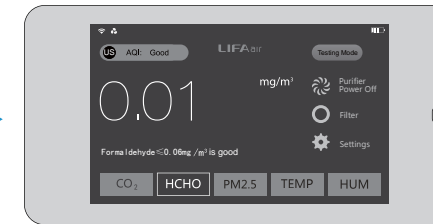


Scan QR code using a mobile phone or scan QR code at the bottom of smart controller

Download and install the APP

Open LIFAair APP, Click the "+" on the phone screen

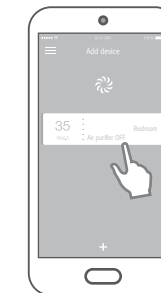
Make sure your phone is properly connected to WiFi network, enter the Wi-Fi password



When prompted, click CONNECT network

Click settings on the smart controller

Select CONFIG → Click CONFIRM

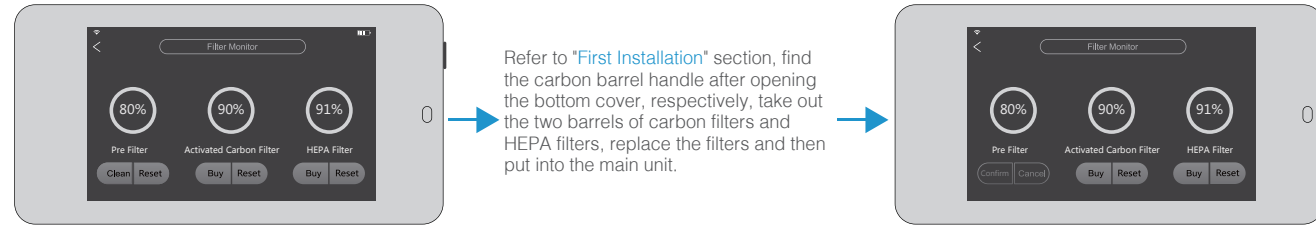


Click the button " network connected "

After successfully connecting to Internet, click the link to the monitors, input smart controller password (last six digits of MAC codes, showed below the DC interface in the rear of smart controller. It is not case-sensitive).

After a successful connection, the phone can control the main unit, and simultaneously display the current data in the smart controller.

Filter replacement (Make sure that the main unit stops running, un-plug the power cord and then clean or replace the filters)



When the filter detection value in smart controller is less than 5%, you need to clean or replace the filter.

Replace the filters

Filter Reset

Clean the prefilter



To clean the prefilter, remove the two carbon barrels, clean it outdoors using a dry cleaner equipped with brush. Clean the dust on the outer surface of carbon barrel. Upon completion of cleaning, put carbon barrels back into the main unit, press the "Reset" button to confirm.

Note: Do not use a wet towel to clean the prefilter, in order to avoid clogging the prefilter.

Product Name: Smart Air Purifier
 Product Type: LA502
 Particle Clean Air Delivery Rate (CADR particulate matter): 450m³/h
 Particle Cumulate Clean Mass (CCM particulate matter): P4 level
 Particle Removal Efficiency: high efficient level
 Formaldehyde Clean Air Delivery Rate (CADR formaldehyde): 240m³/h
 Formaldehyde Cumulate Clean Mass (CCM formaldehyde): F4 level

PM2.5 sensor: Laser type
 CO₂ sensor: Dual thermopile type
 Formaldehyde Sensor: Electrochemical Smart type
 Temperature / Humidity Sensor: Semiconductor + Thermal Resistance type
 Formaldehyde Removal Efficiency: high efficient level
 Noise: ≤66dB (A)
 Application area: 31m² ~ 54m²

Frequency Band (Wi-Fi): 2.412GHz-2.484GHz
 Frequency Band (Bluetooth): 2.402GHz-2.480GHz
 RF Power output: ≤20 dBm (EIRP)

There are no restrictions of use.

Note: for application area, it is in accordance with GB/T18801-2015 calculated based on the value of CADR for particle. Performance data above are in accordance with GB/T18801-2015 tested by the third-party laboratories by using particular soot particles or gaseous pollutants as targeted pollutants.

Troubleshooting

Purifier not working?

Please check whether the power cord is connected correctly.
 Please check whether the purifier is at minimum wind speed.
 Please check whether the bottom cover is in the lock position.

Running noise?

Please check whether the filter is installed.
 Please check whether the protective bags of the carbon barrel have been removed.

Formaldehyde readings suddenly increase?

Because formaldehyde sensor is an electrochemical sensor, many other gases will react, such as alcohol, perfume, humidity sudden increasing can produce false readings, which is a normal phenomenon. If the interference cannot be eliminated for a long period, please perform Zero Settings → ⚙ Settings → Sensor calibration in indoors, directly press the formaldehyde sensor zeroing → confirmation.

Formaldehyde or carbon dioxide have inaccurate readings?

Please use the following process:
 ⚙ Settings → sensor calibration, according to the standard method of zeroing in outdoors for 30 minutes, use the "Testing Mode" when turn on the smart controller, and then perform zeroing for formaldehyde and carbon dioxide sensor respectively.